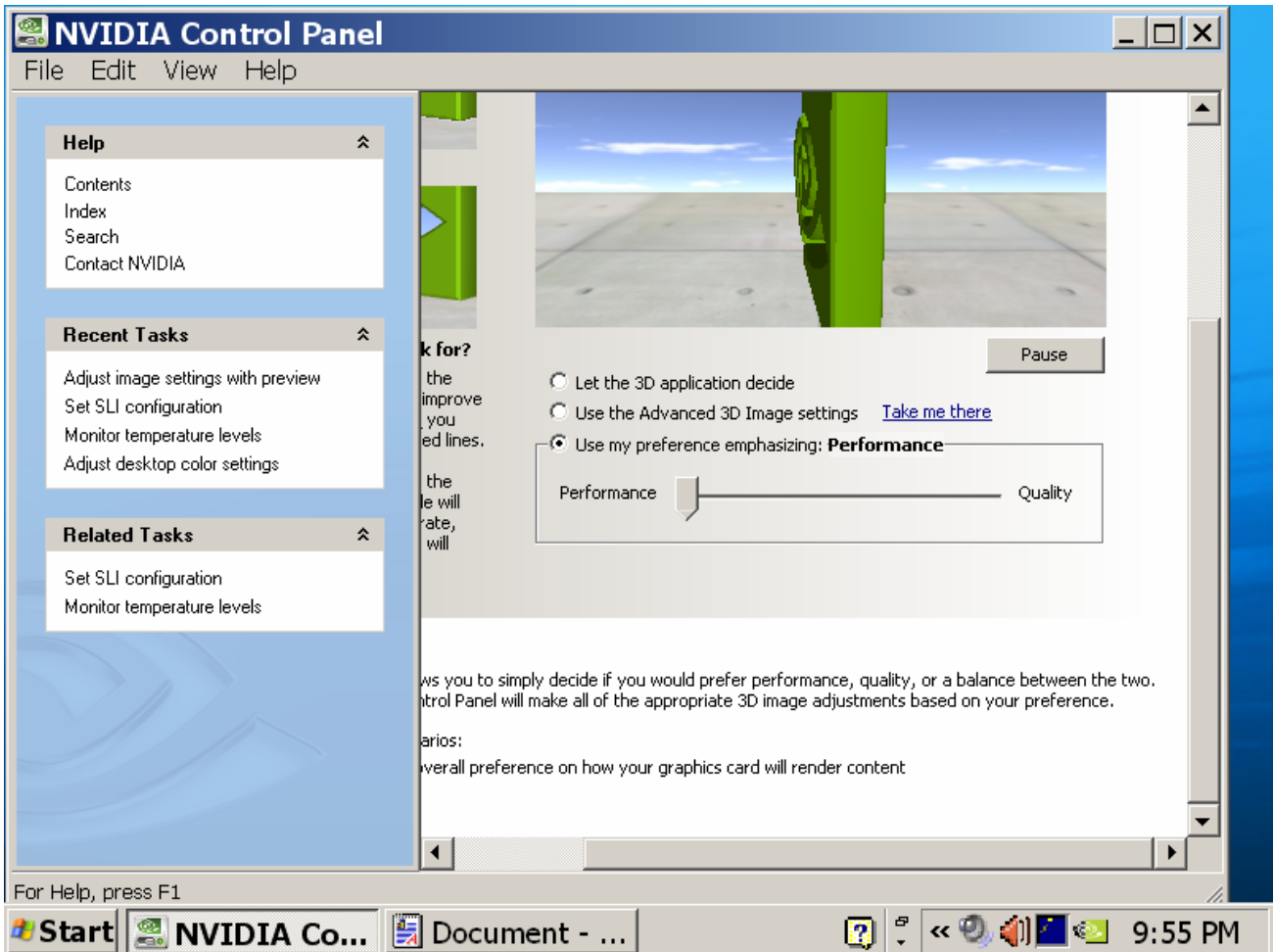


NVIDIA SETTINGS





NVIDIA Control Panel File Edit View Profiles Display Help

Adjust Desktop Color Settings











Control Panel Categories > Display [Restore Defaults](#)

With this page you can adjust your color settings.

1. Select the display you would like to change.

 TV  DEC Analog Display

2. Apply the following color settings to the selected display.

	Brightness:	-		+ 51%
	Digital Vibrance:	-		+ 3%
	Contrast:	-		+ 29%
	Image sharpening:	-		+ 42%
	Gamma:	-		+ 4%

For Help, press F1



Start Settings NVIDIA Co... 10:01 PM

NVIDIA Control Panel File Edit View Profiles Display Help


Change Resolution Attributes
Control Panel Categories » Display Restore Defaults


You can change the color setting, reduce flickering, or adjust the amount of information a

1. Select the display you would like to change.

 TV  DEC Analog Display

2. Choose the display settings for the selected display.

Display resolution: Less  More
800 by 600 pixels

Color quality: Less  More
Highest (32-bit color)

Refresh rate: 60 Hertz

For Help, press F1

Start NVIDIA Co... 10:03 PM

NVIDIA Control Panel File Edit View Help

Adjust Video Color Settings
Control Panel Categories » Video & Television Restore Defaults

Adjusting the video color settings will allow you to fine tune the color settings for video content while you make adjustments to view the changes as they happen.

TV DEC Analog Display

Apply the following settings to my video content...

Brightness	-	Slider	+	58%
Contrast	-	Slider	+	27%
Hue	-	Slider	+	51%
Saturation	-	Slider	+	42%
Gamma	-	Slider	+	0%

For Help, press F1

Start NVIDIA Co... 10:05 PM


NVIDIA Control Panel File Edit View Help

Adjust Television Color Settings

Control Panel Categories » Video & Television [Restore Defaults](#)





You can adjust your television picture quality for the best possible viewing in its environment.

1. Select the display you would like to change.



TV

2. Apply the following settings to my television.

	Brightness:	-	<input type="range"/>	+	102%
	Contrast:	-	<input type="range"/>	+	74%
	Saturation:	-	<input type="range"/>	+	197%
	Flicker filter:	-	<input type="range"/>	+	127%

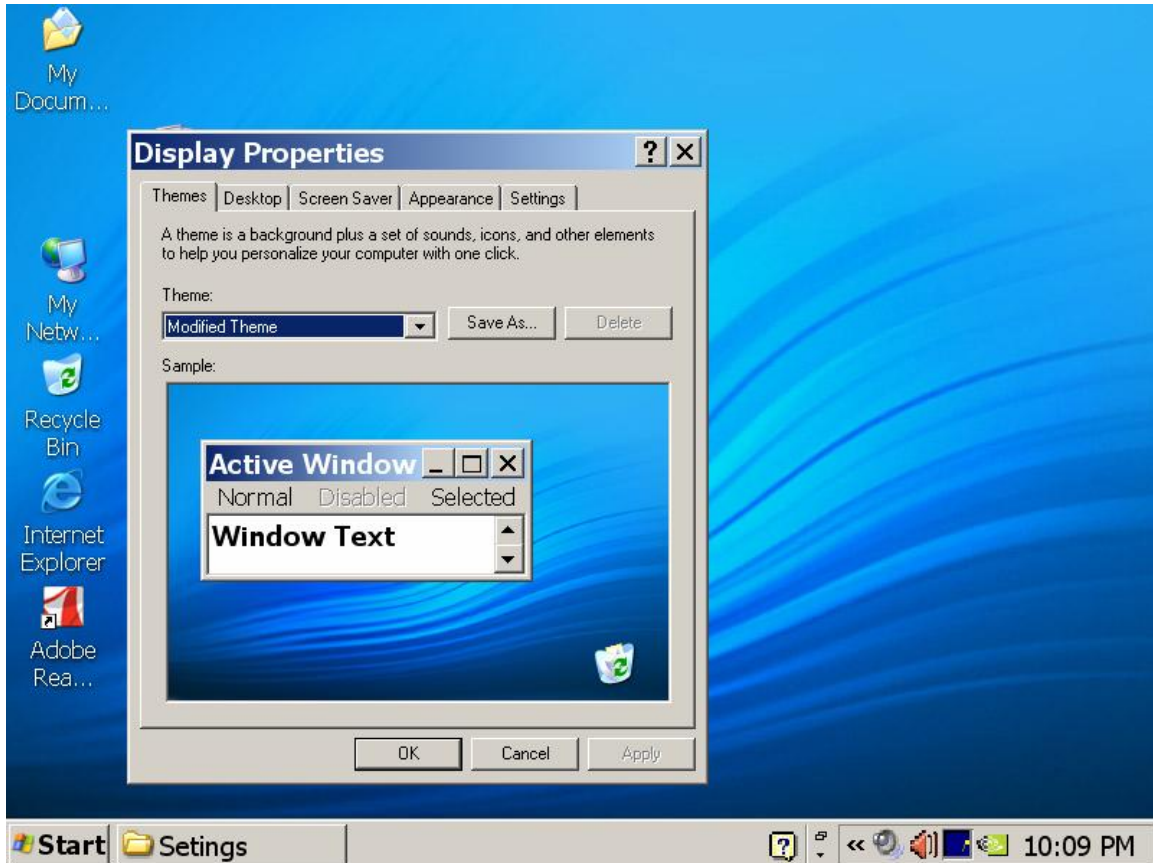
Description:

For Help, press F1

Start | NVIDIA Co... | Document - ... | 10:06 PM

WINDOWS SETTINGS

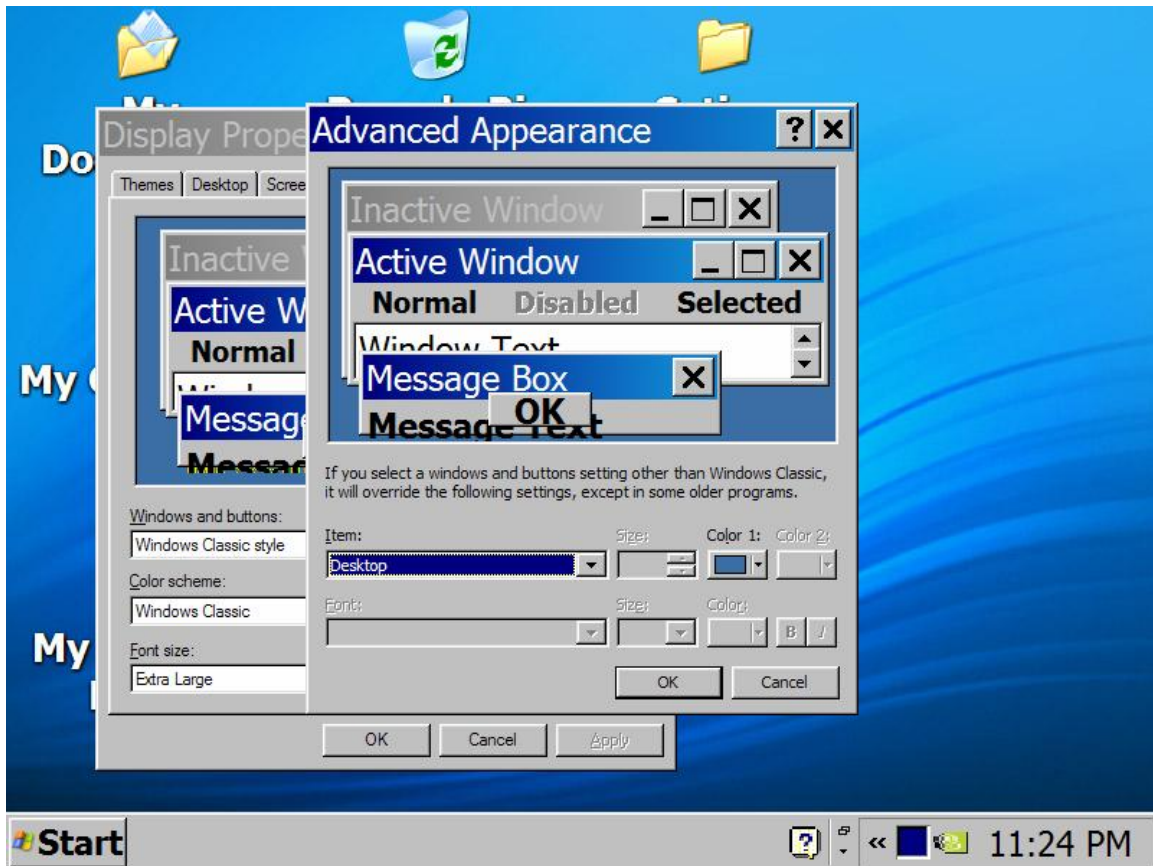
* Right Click on Desktop and select Properties then click on Themes:



* Right Click on Desktop and select Properties then click on Appearance:



* Right Click on Desktop and select Properties then click on Appearance -> Click on Advance Button:



In Advance Appearance window we need to change the Item Properties.

1. Click on Item Dropdown list and select **Icon** then
Set **Item** size=50, **Font**-Tahoma, size=20, Font Bold.
2. Click on Item Dropdown list and select **Icon Spacing (Horizontal)** then
Set **Item** size=150.
3. Click on Item Dropdown list and select **Icon Spacing (Vertical)** then
Set **Item** size=90.
4. Click on Item Dropdown list and select **Menu** then
Set **Item** size=35, **Font**-Tahoma, size=15, Color=Black.
5. Click on Item Dropdown list and select **Message Box** then
Set **Font**-Tahoma, size=15,Color=Black.
6. Click on Item Dropdown list and select **Selected Item** then
Set **Item** size=18 Item Color=Blue, **Font**-Tahoma, size=20.

* Right Click on Desktop and select Properties then click on Appearance -> Click on Effect Button:

